

Objective

Provide assistance to setup a CP5316 Profibus card to a Eurotherm Drives Link system

Note: This document is an instructional tool with snapshots to assist with the setup.

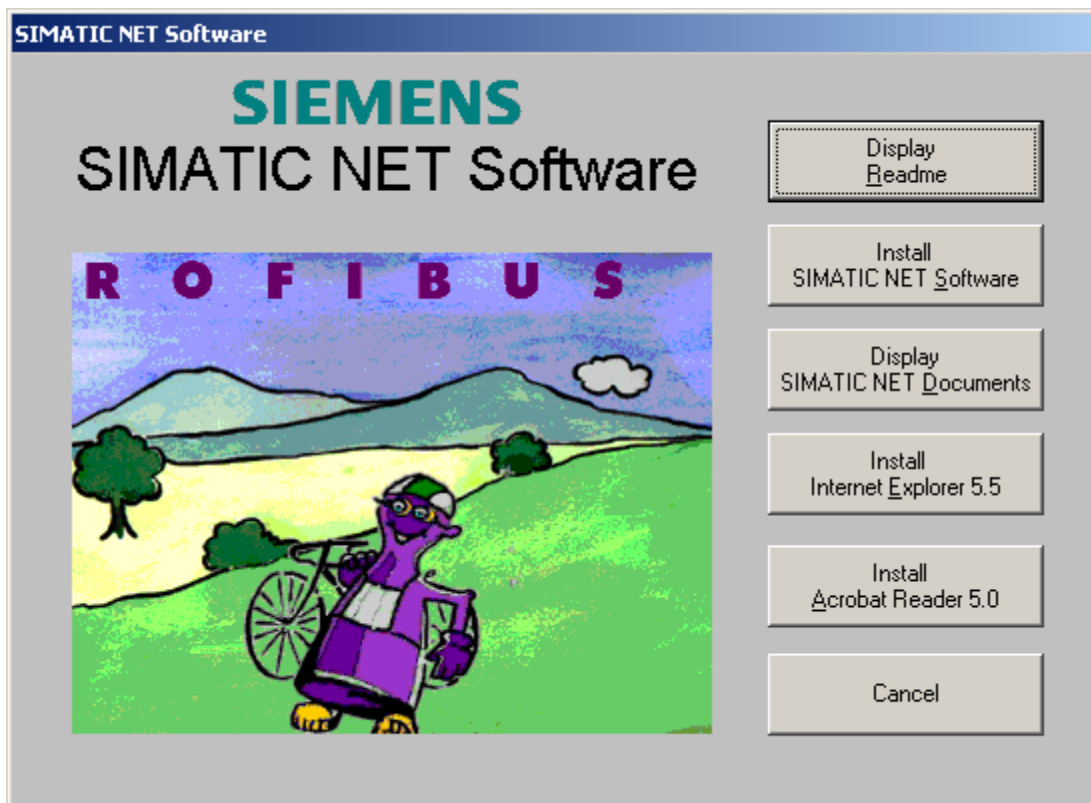
Equipment

Siemens CP5316 Profibus “Master” card, LinkRack (L5300), Profibus LinkCard L5353

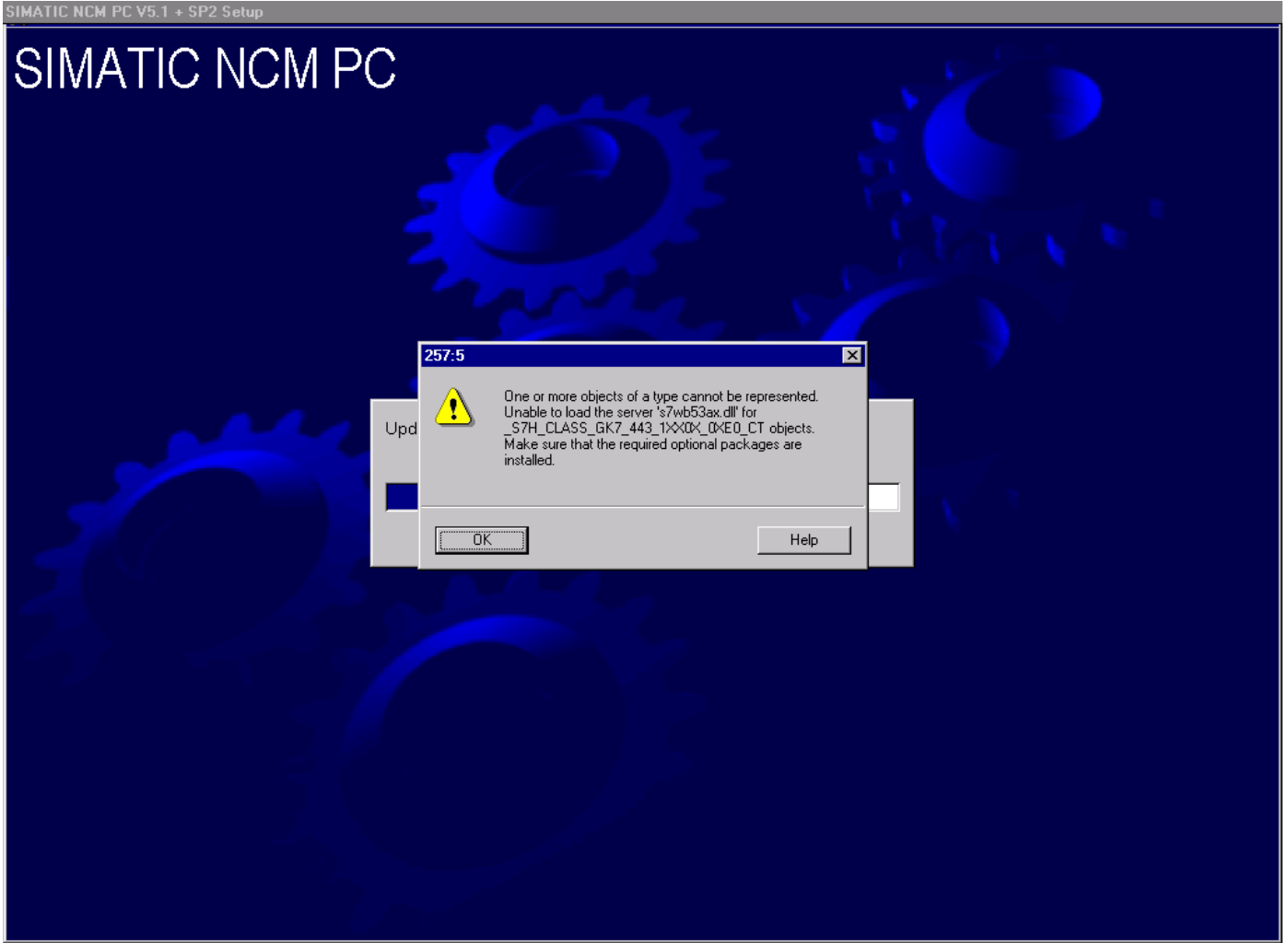
Procedure

This document is to assist with installing a Siemens CP5316 Profibus card in a PC to tie in 17 Eurotherm Drives. The 5316 communicates to an Eurotherm L5353 in a LinkRack (L5300). The LinkRack (L5300) uses fiber optics to communicate to the 17 drives.

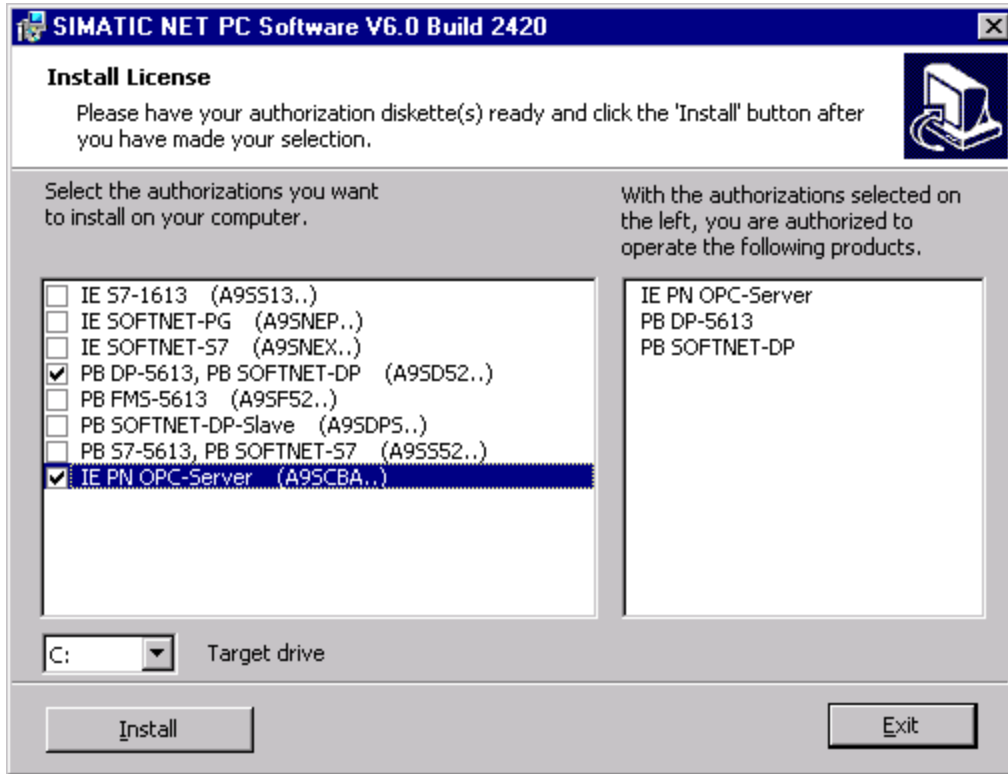
Note: Install the Siemens software before installing the 5316 Hardware card in the PC. The Siemens CD provides help with HTML setup in the overview.



If you have questions, please call the Product Support Group at (704) 588-3246.

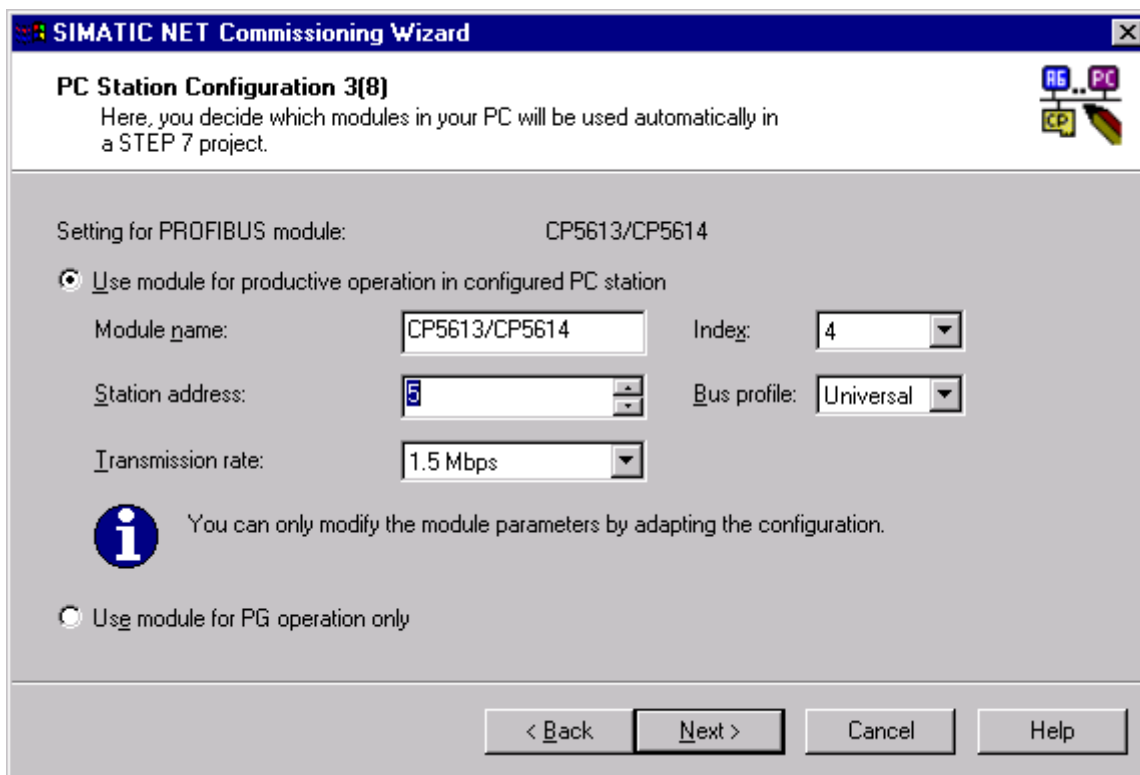
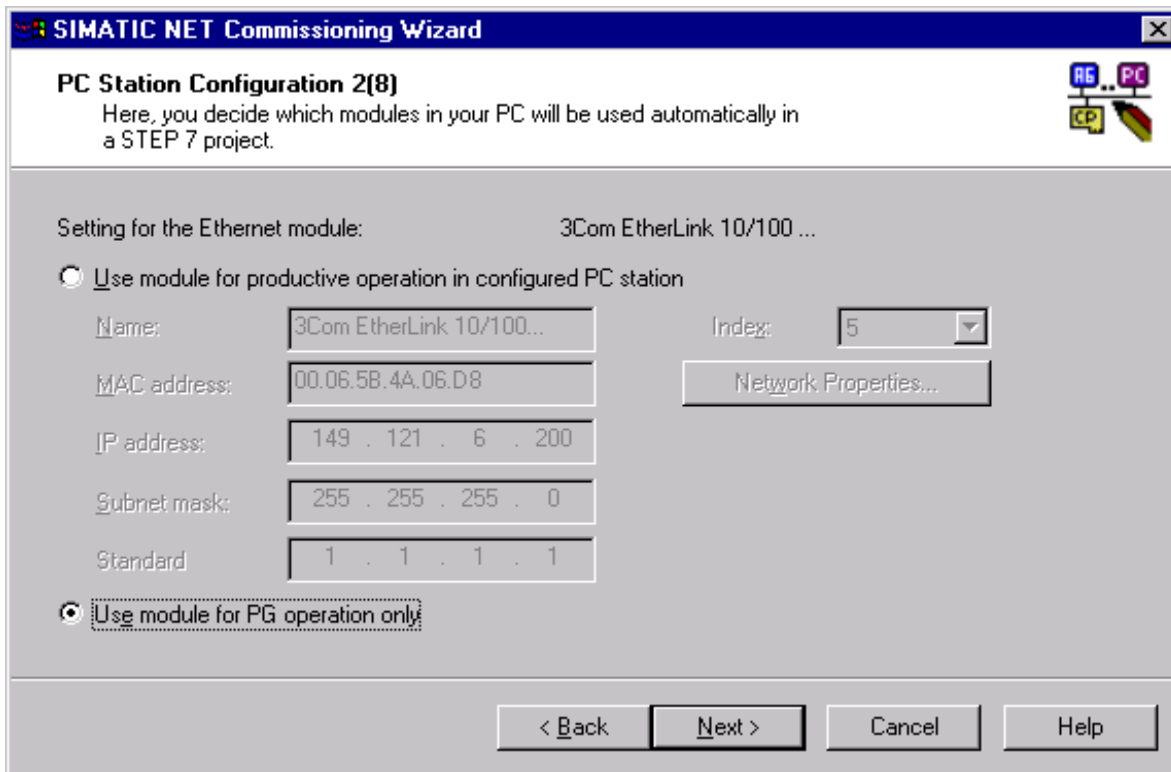


If you have questions, please call the Product Support Group at (704) 588-3246.

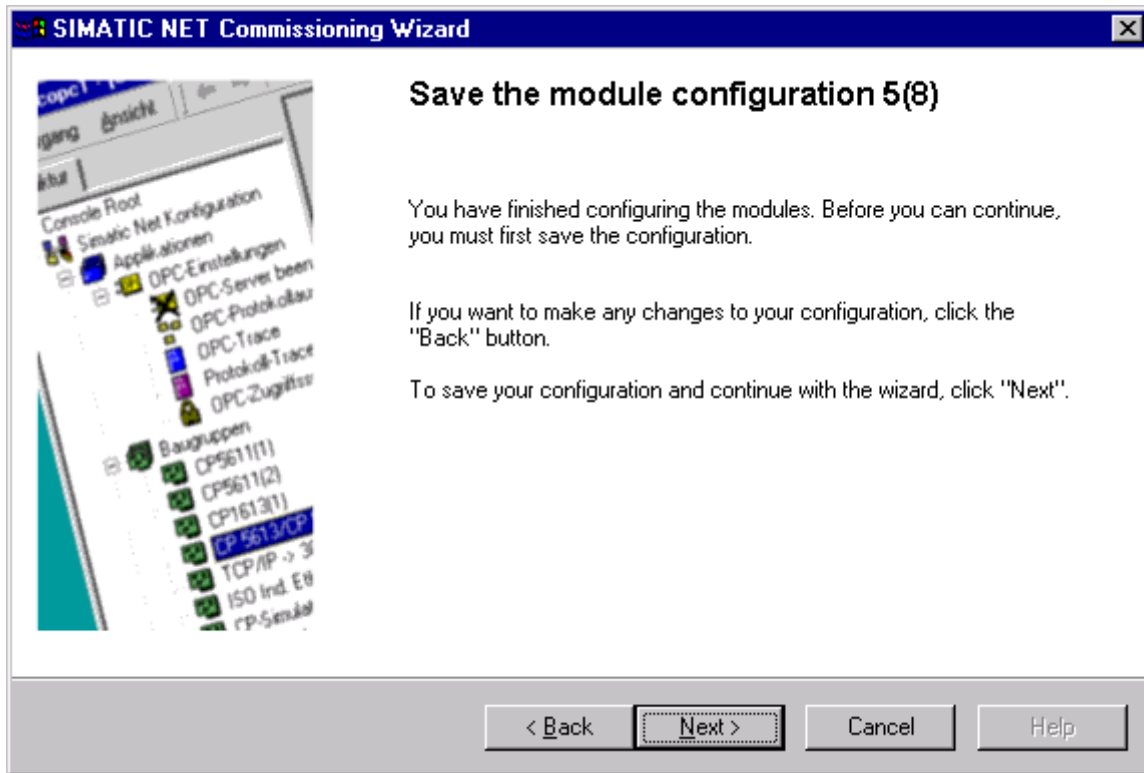
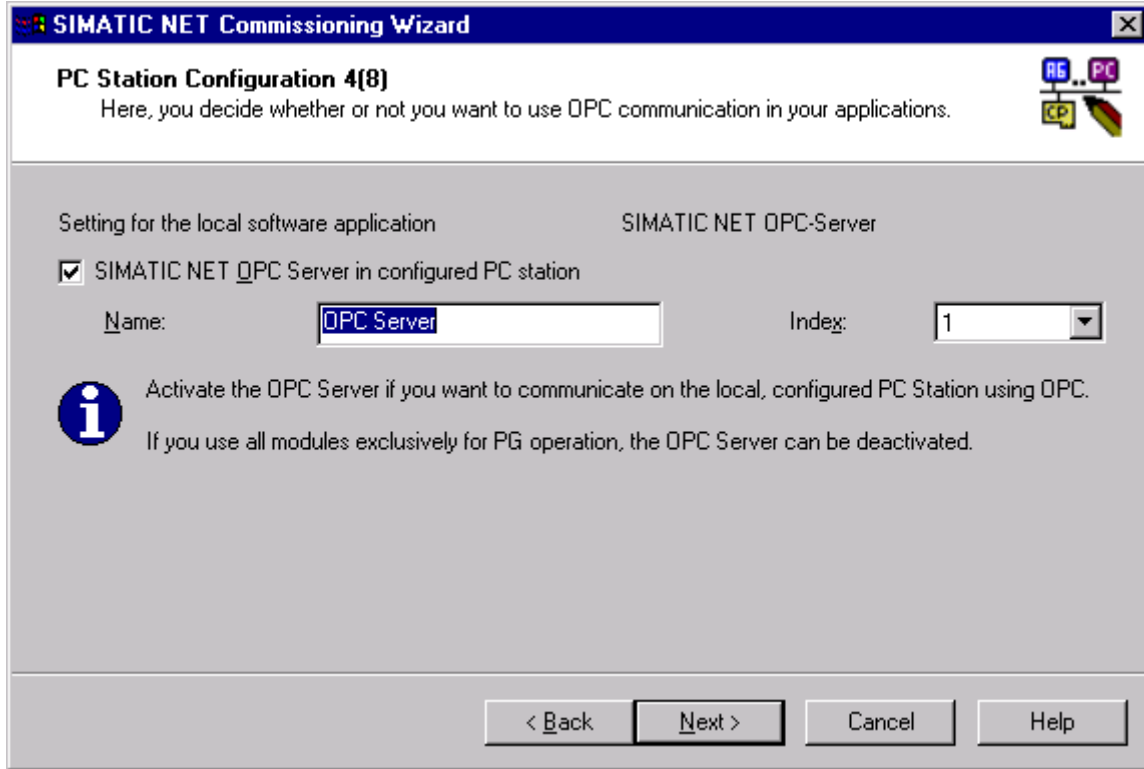


Note: Exit license install if floppy disk license is not available.

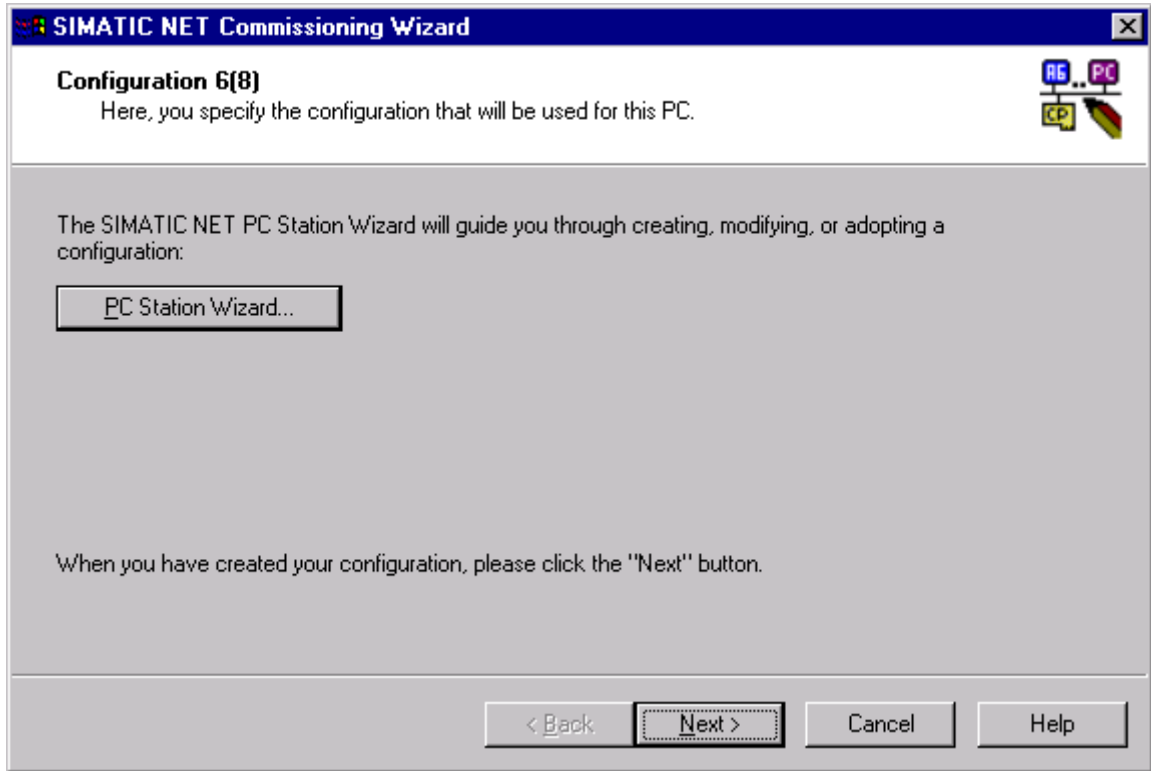
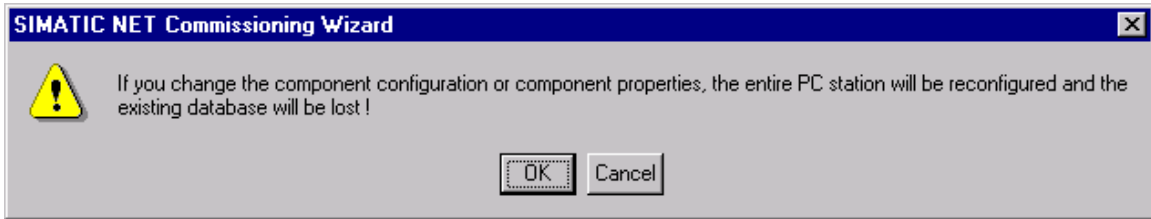
If you have questions, please call the Product Support Group at (704) 588-3246.



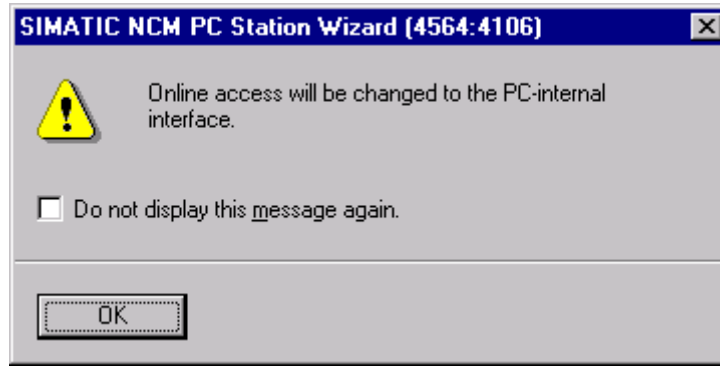
If you have questions, please call the Product Support Group at (704) 588-3246.



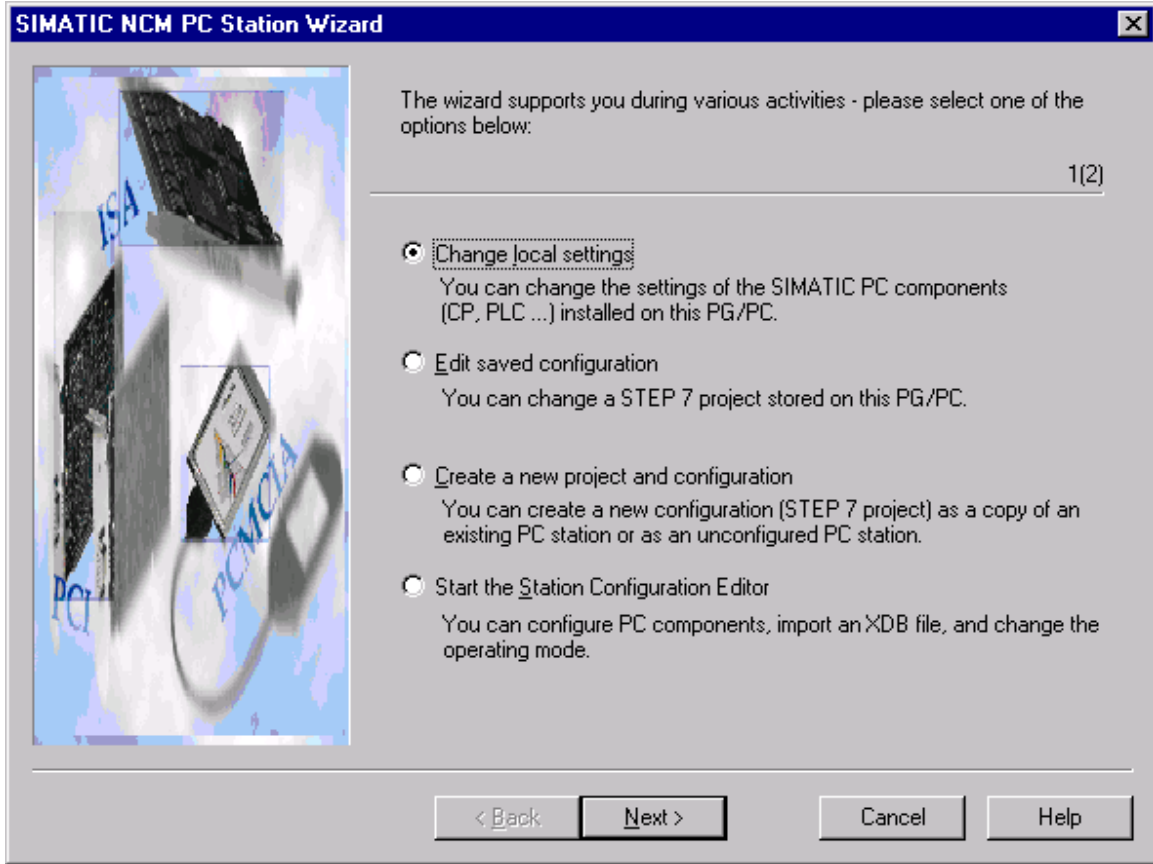
If you have questions, please call the Product Support Group at (704) 588-3246.



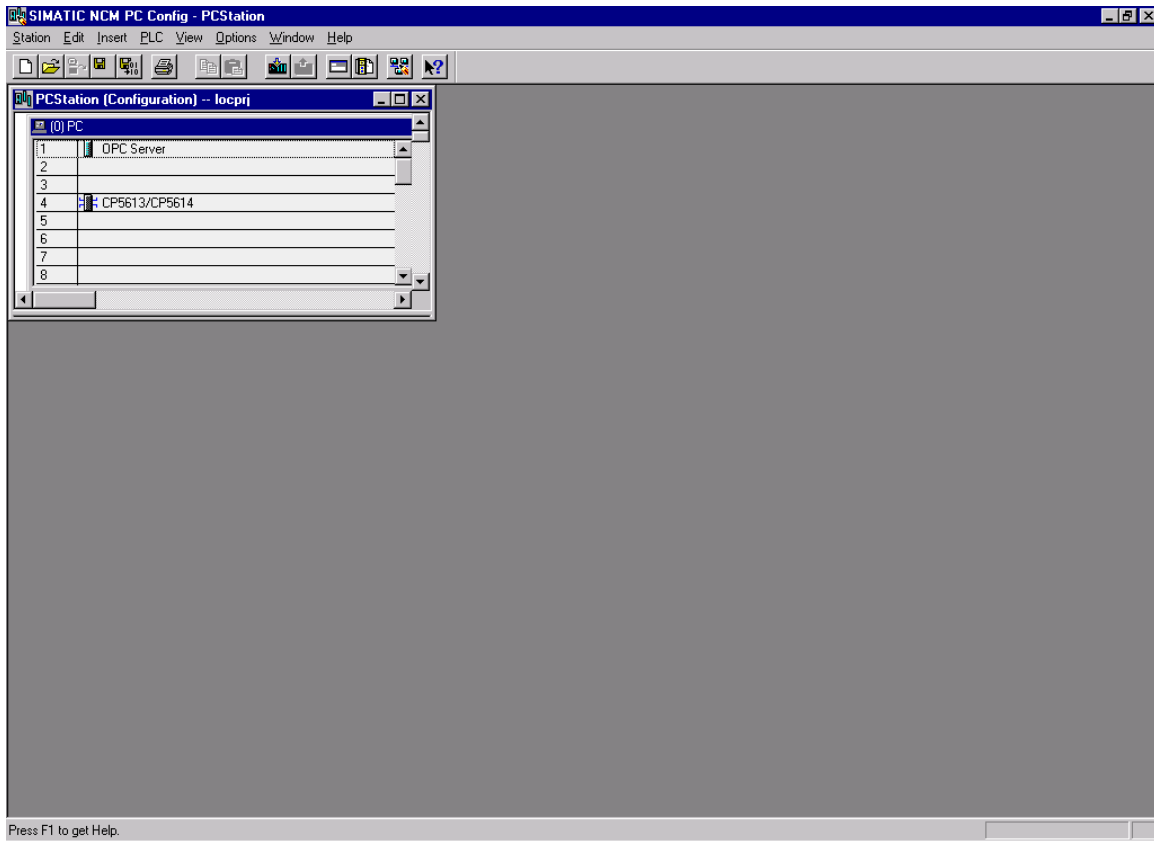
If you have questions, please call the Product Support Group at (704) 588-3246.



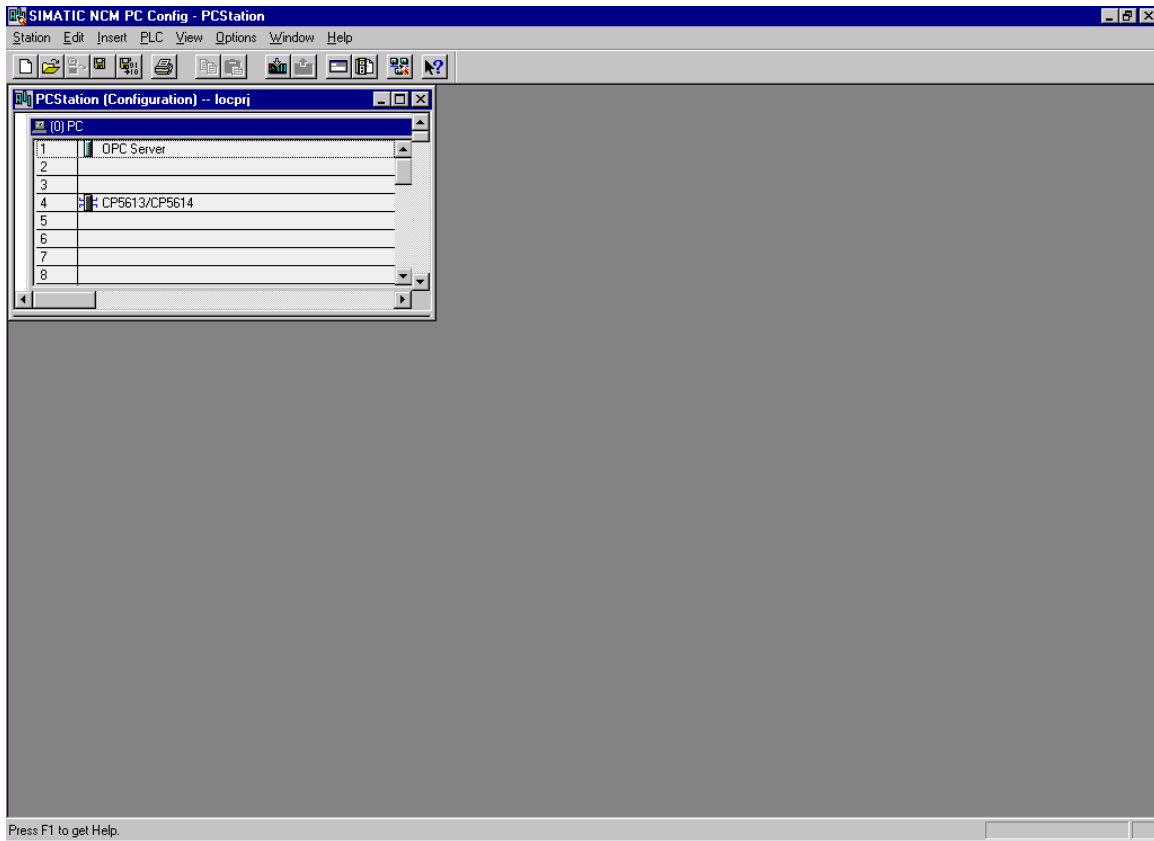
If you have questions, please call the Product Support Group at (704) 588-3246.



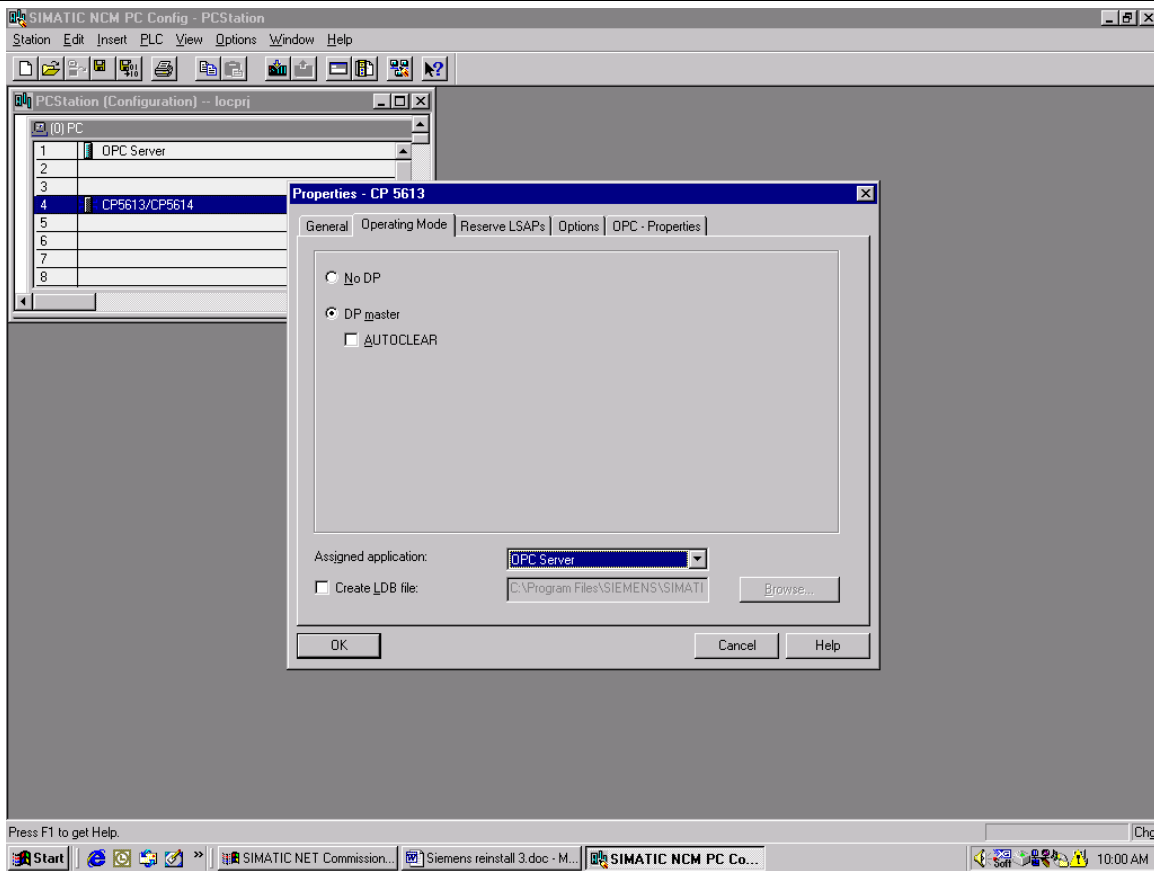
If you have questions, please call the Product Support Group at (704) 588-3246.



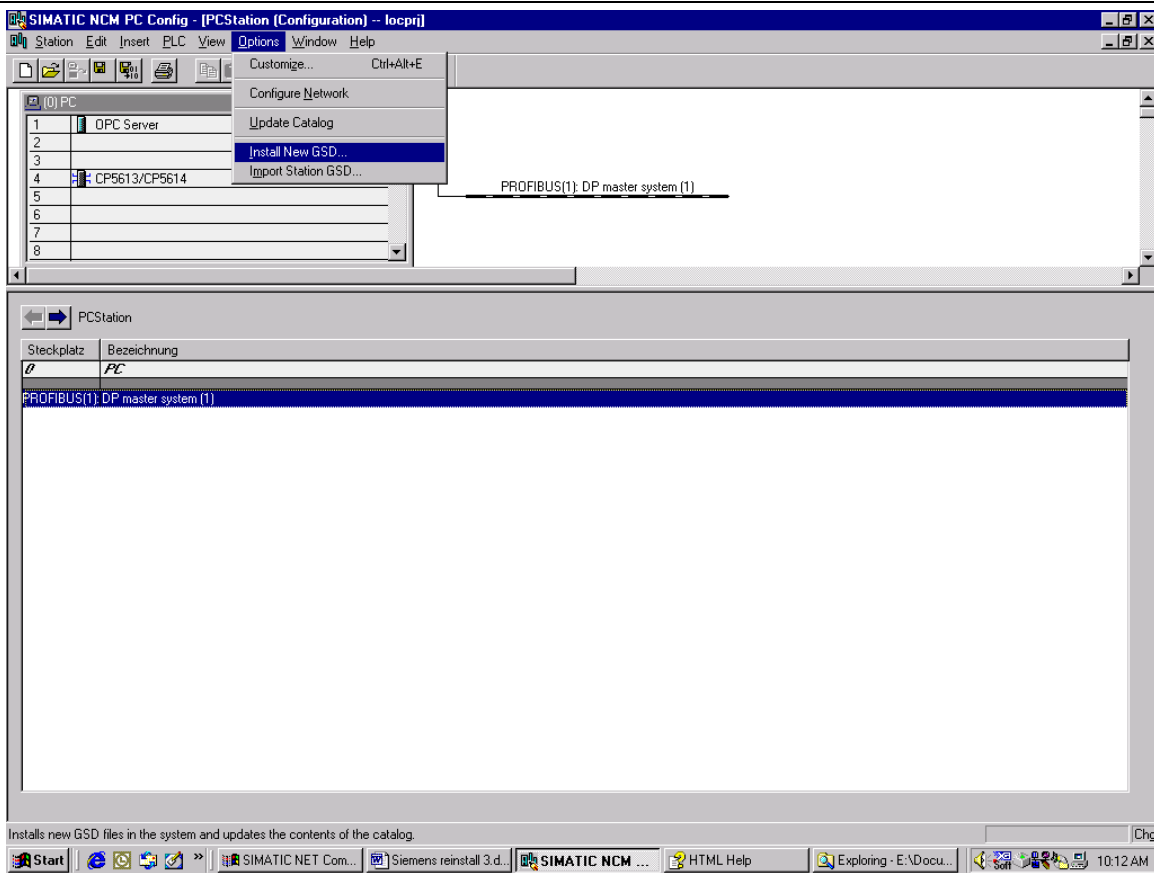
If you have questions, please call the Product Support Group at (704) 588-3246.



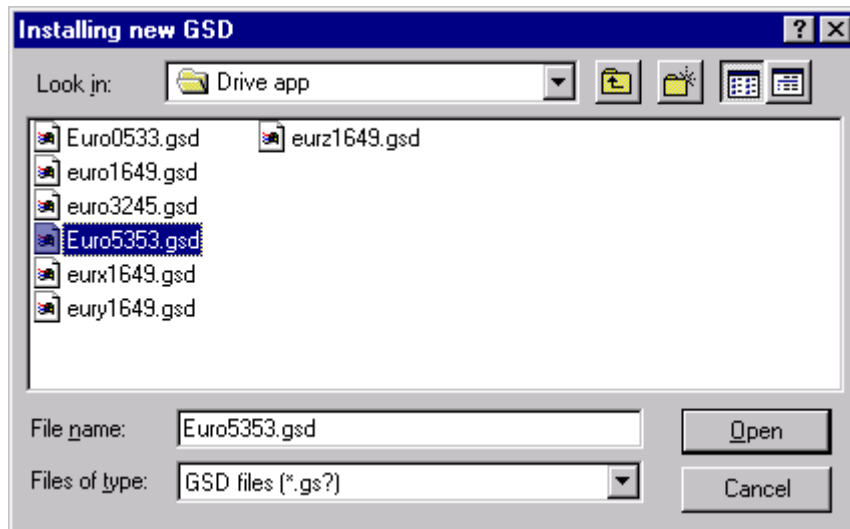
If you have questions, please call the Product Support Group at (704) 588-3246.



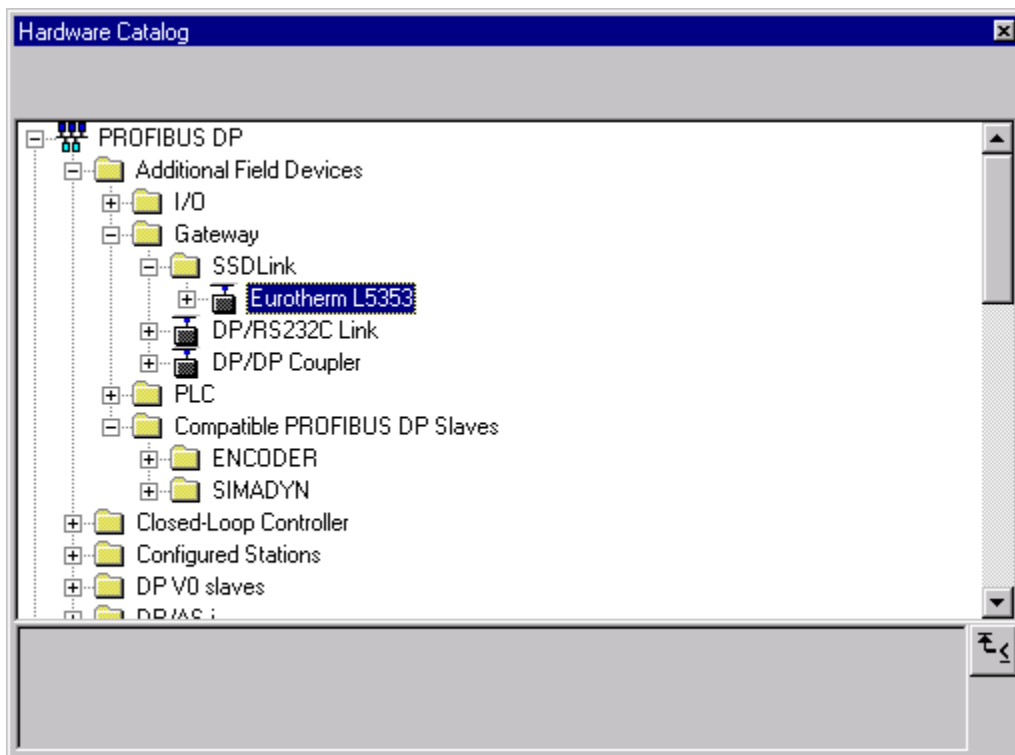
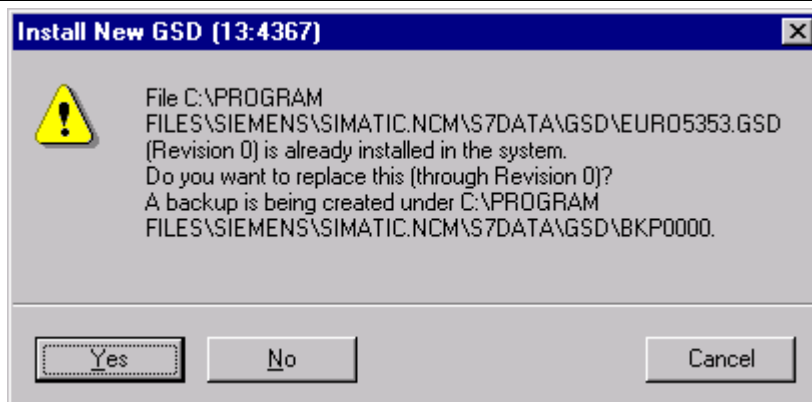
If you have questions, please call the Product Support Group at (704) 588-3246.



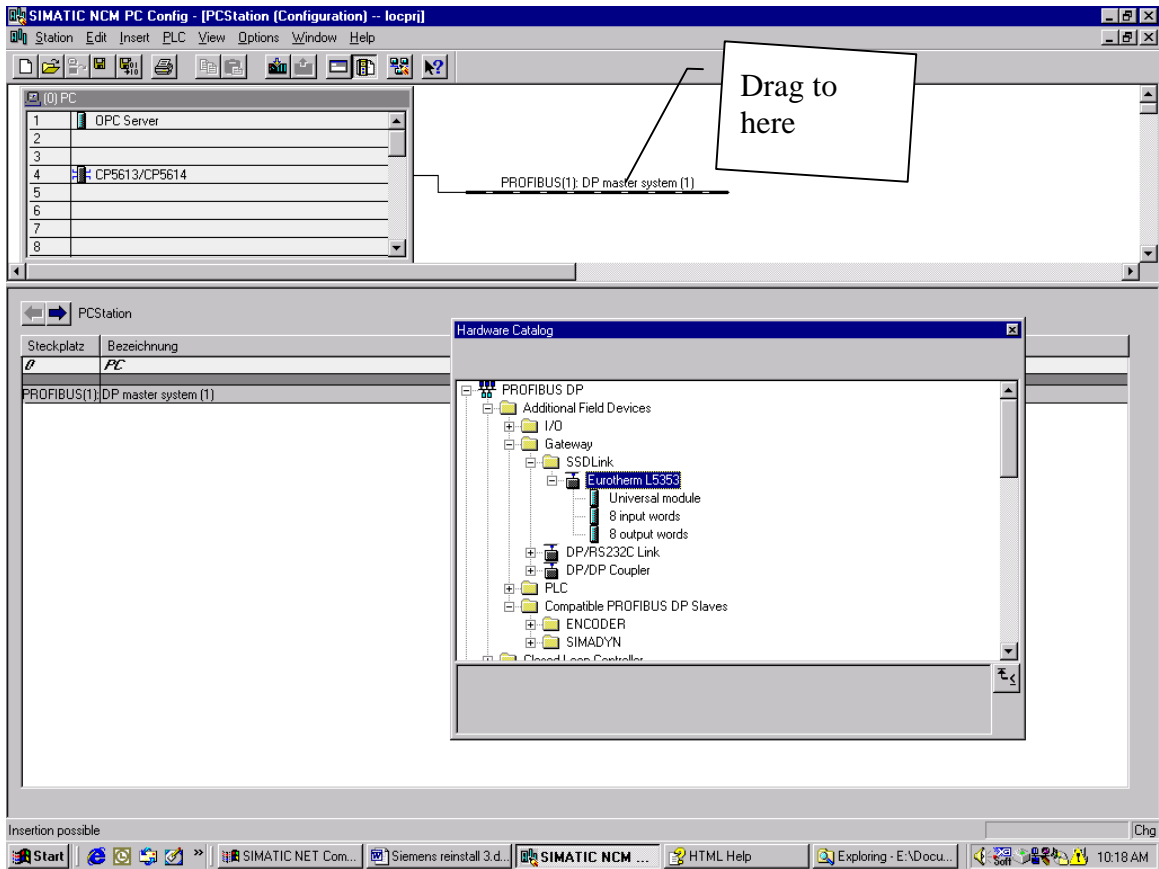
The Euro5353.GSD file was provided by Eurotherm Drives for this project.



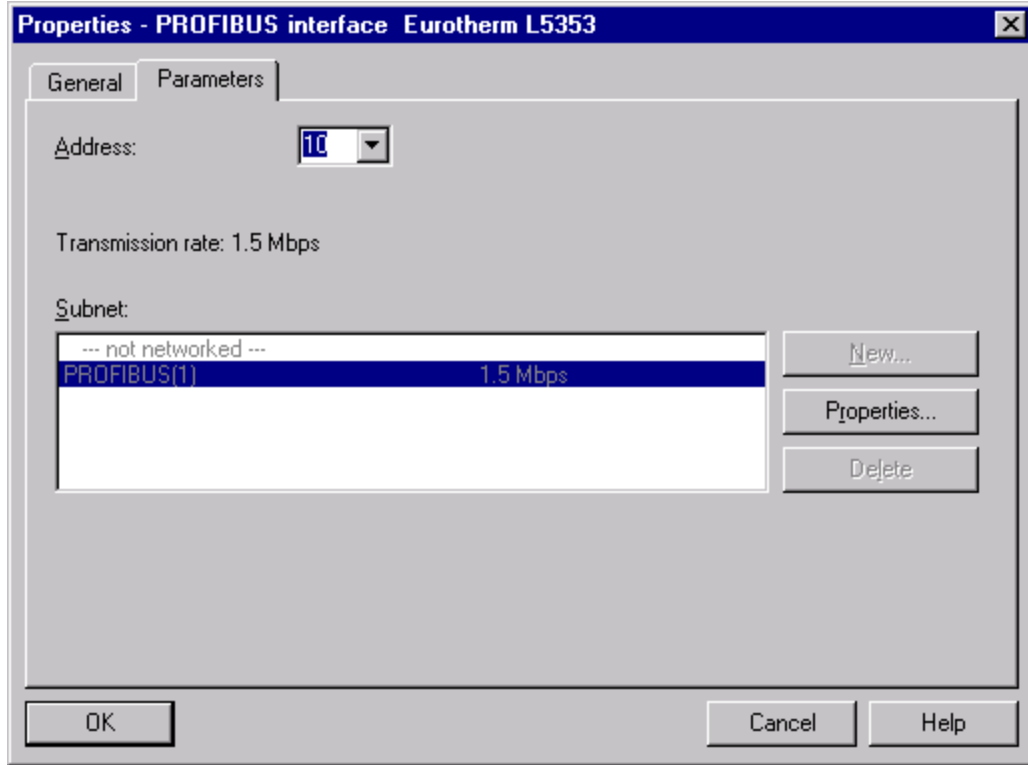
If you have questions, please call the Product Support Group at (704) 588-3246.



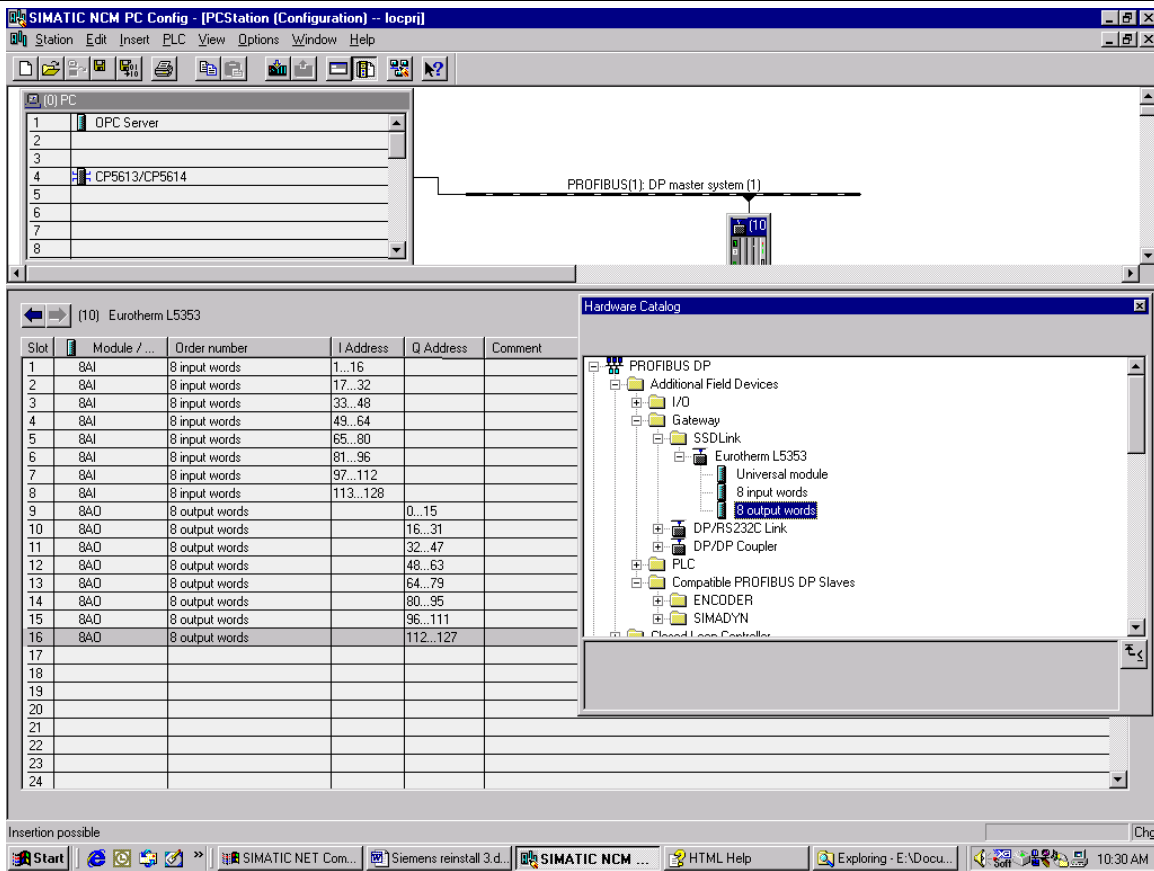
If you have questions, please call the Product Support Group at (704) 588-3246.



If you have questions, please call the Product Support Group at (704) 588-3246.



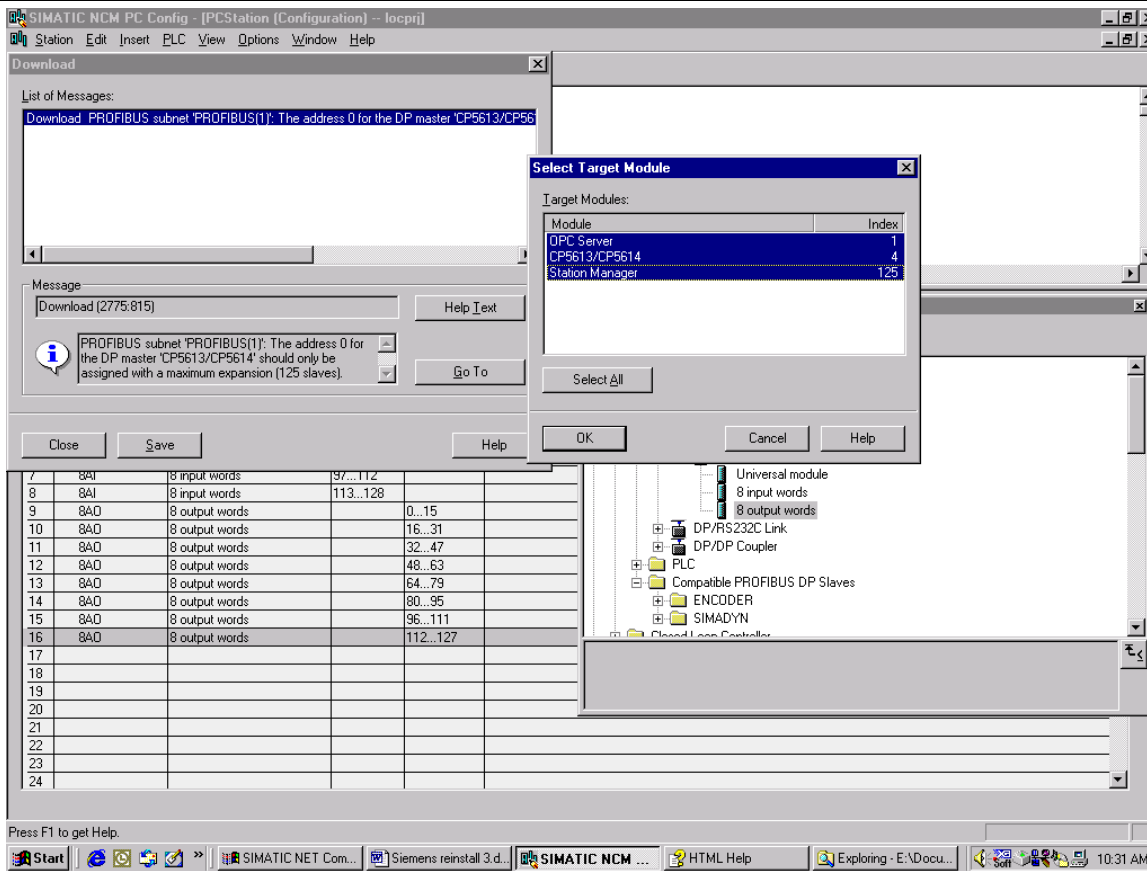
If you have questions, please call the Product Support Group at (704) 588-3246.



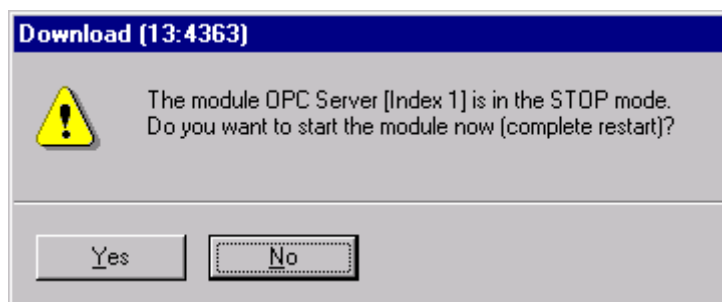
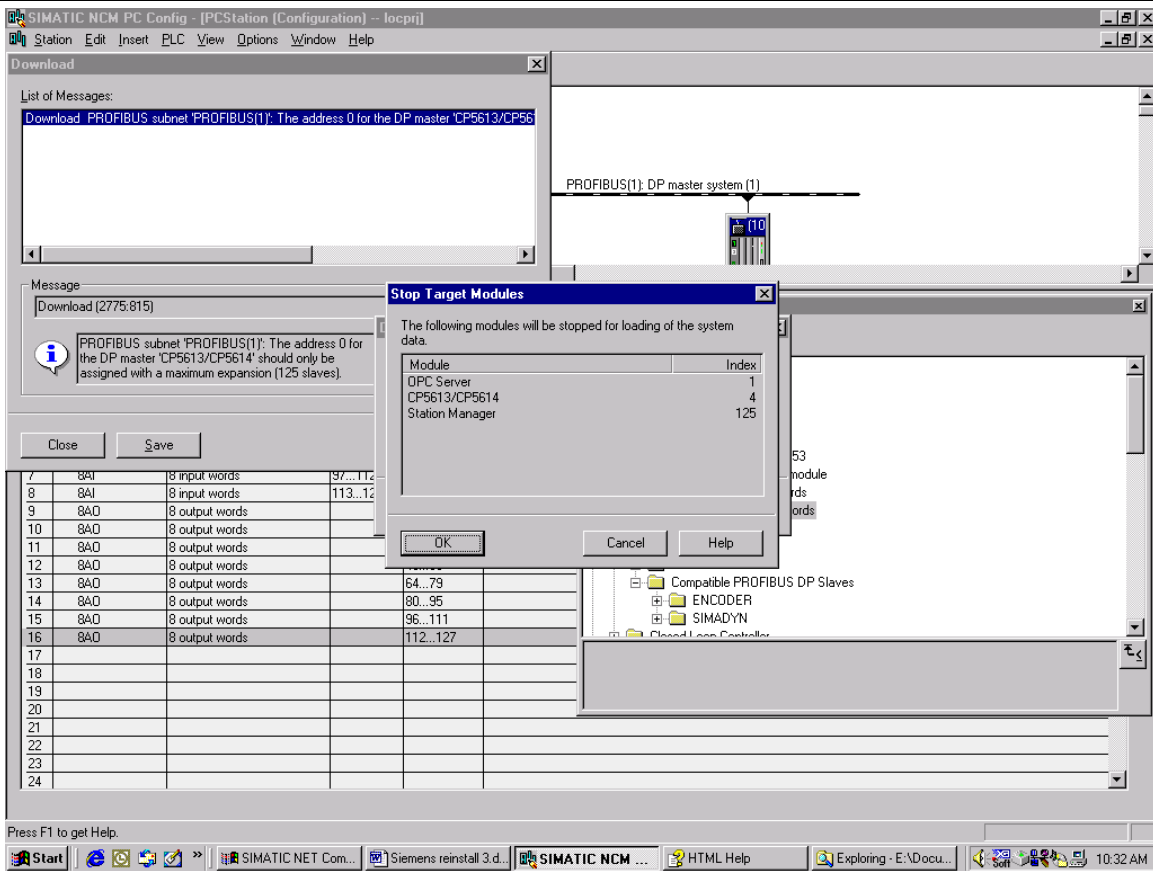
Save and compile was OK.

Download

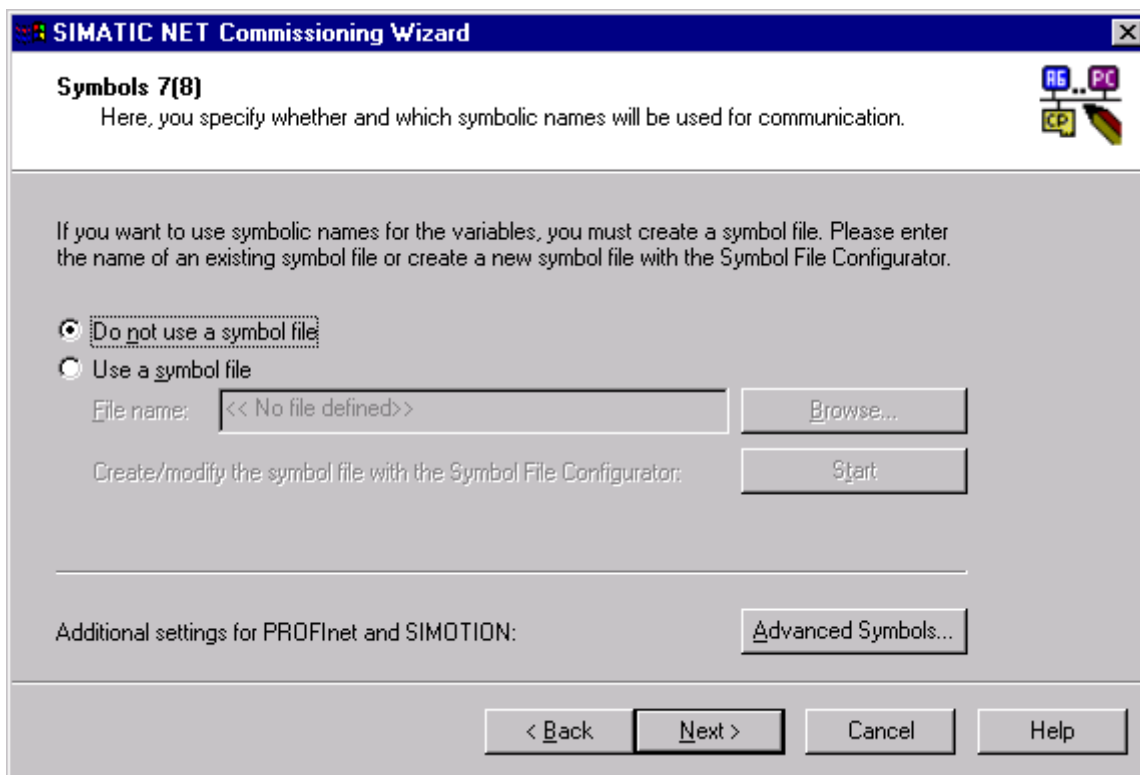
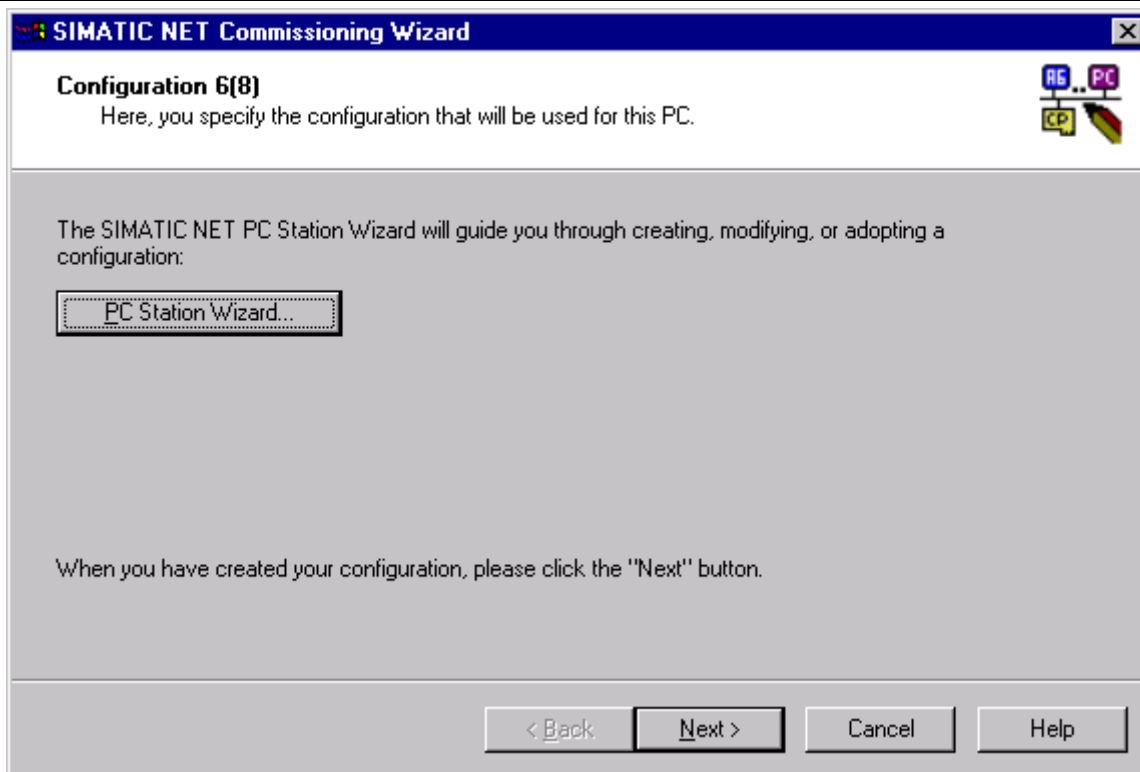
If you have questions, please call the Product Support Group at (704) 588-3246.



If you have questions, please call the Product Support Group at (704) 588-3246.



If you have questions, please call the Product Support Group at (704) 588-3246.



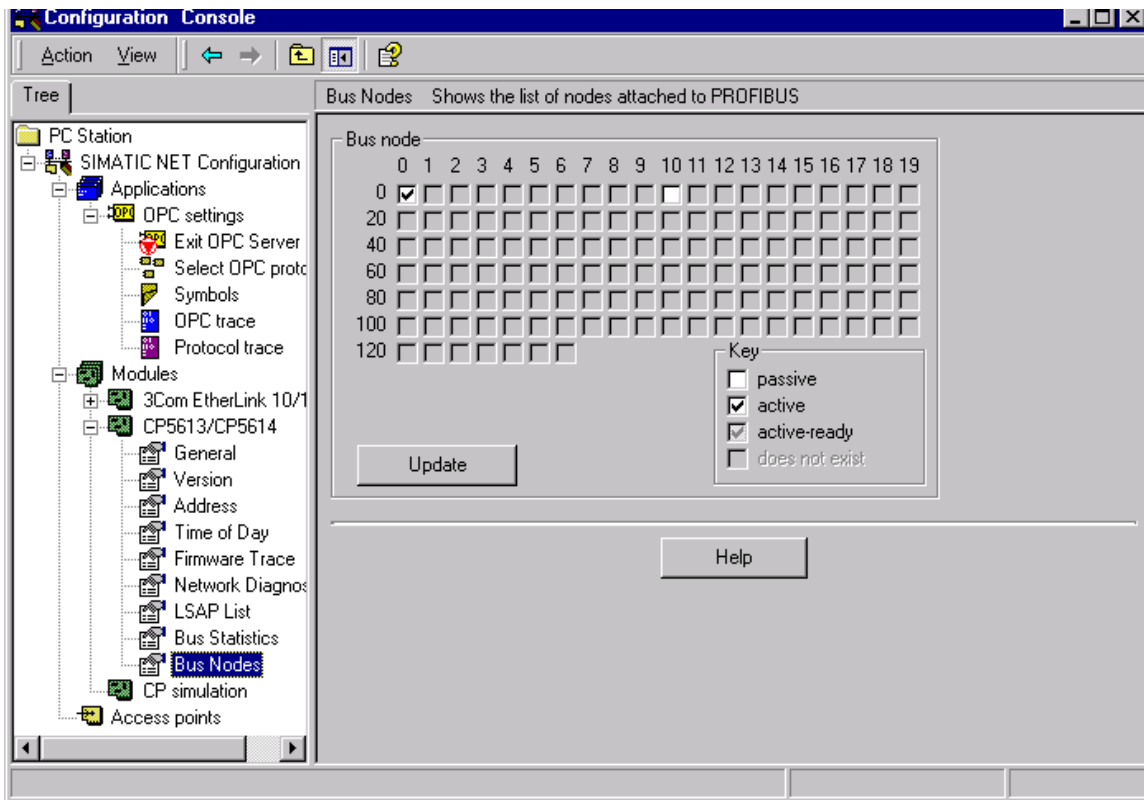
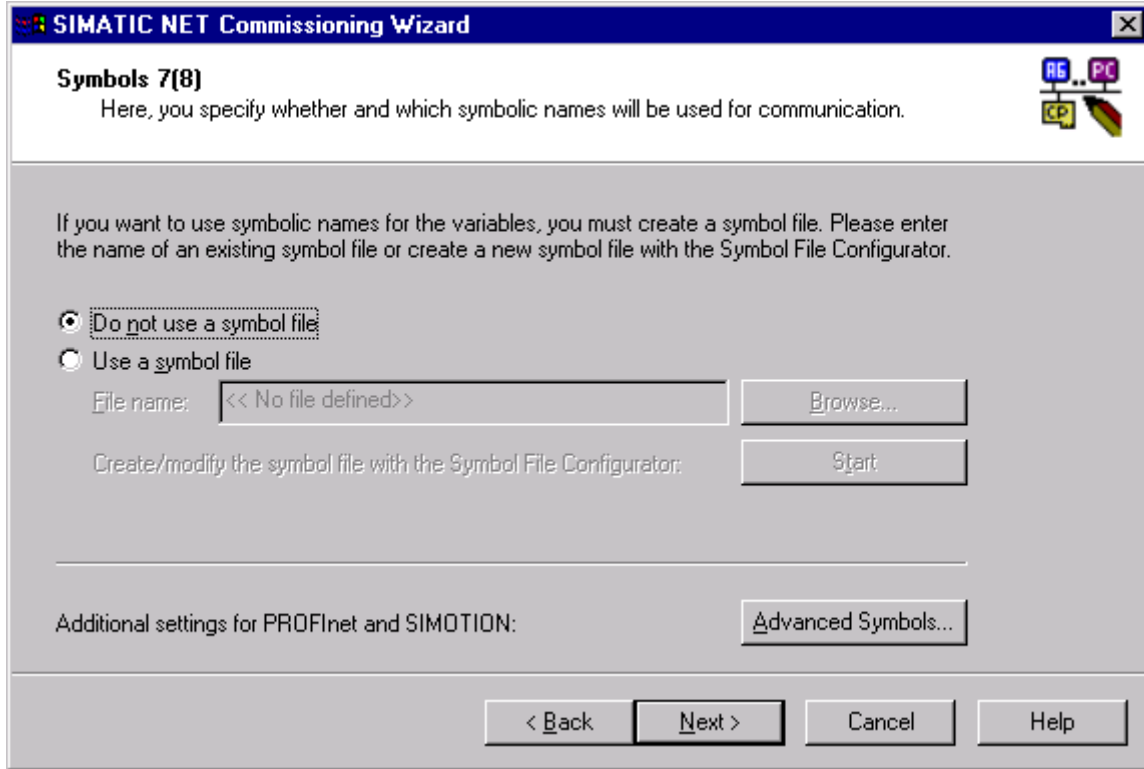
If you have questions, please call the Product Support Group at (704) 588-3246.

The screenshot shows the OPC Scout software interface. The main window displays a tree view of servers and groups. A dialog box titled "OPC-Navigator" is open, showing a list of nodes and their properties. The "Leaves" column lists items like "_Iw0" through "_Iw8". The "Item Names" column shows the full path for each item, such as "DP:[CP5613/CP5614]Slave010M00_Iw0". The "Basis" column shows the device identifier "DP:[CP5613/CP5614]". The "OrigName" column is empty. A message box on the right states "The listed Item(s) will be added to Group: Drive_3_5_02". The status bar at the bottom indicates "Successfully connected to: 'OPC.SimaticNET.DP'".

Item Name	Value	Format	Type	Access	Quality	e Stamp (L)
1						

Leaves	Item Names	Basis	OrigName
_Iw0	DP:[CP5613/CP5614]Slave010M00_Iw0	DP:[CP5613/CP5614]	
_Iw10	DP:[CP5613/CP5614]Slave010M00_Iw10	DP:[CP5613/CP5614]	
_Iw12	DP:[CP5613/CP5614]Slave010M00_Iw12	DP:[CP5613/CP5614]	
_Iw14	DP:[CP5613/CP5614]Slave010M00_Iw14	DP:[CP5613/CP5614]	
_Iw2	DP:[CP5613/CP5614]Slave010M00_Iw2	DP:[CP5613/CP5614]	
_Iw4	DP:[CP5613/CP5614]Slave010M00_Iw4	DP:[CP5613/CP5614]	
_Iw6	DP:[CP5613/CP5614]Slave010M00_Iw6	DP:[CP5613/CP5614]	
_Iw8	DP:[CP5613/CP5614]Slave010M00_Iw8	DP:[CP5613/CP5614]	

If you have questions, please call the Product Support Group at (704) 588-3246.



If you have questions, please call the Product Support Group at (704) 588-3246.