

Objective

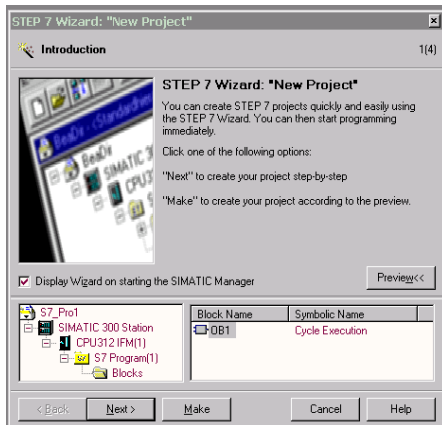
To setup communications between a Siemens PLC™ S7-315™ Master to Eurotherm Drives Profibus communication module L5353.

Equipment

- S7 PLC, Simatic™ Manager Step 7 Software, L5300 or L5392, L5311, and L5353.

Procedure

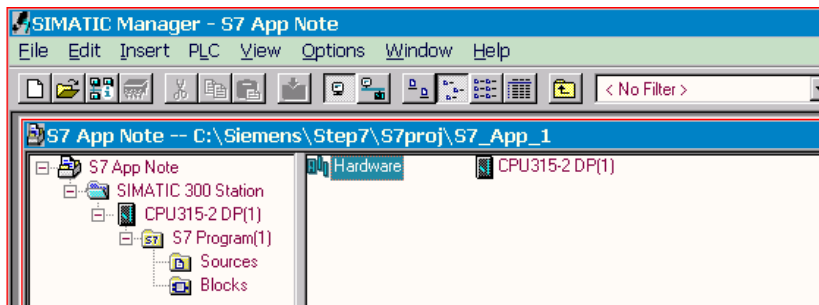
Note: The project wizard in Step 7 will guide you to set up the PLC.



1. Initialize Simatic™ Manager
2. Select the CPU type

Note: The following blocks are recommended to be added to the PLC configuration OB1, OB82, OB85, OB86, and OB 122.

3. Install the Eurotherm Drives GSD file euro5353.gsd.

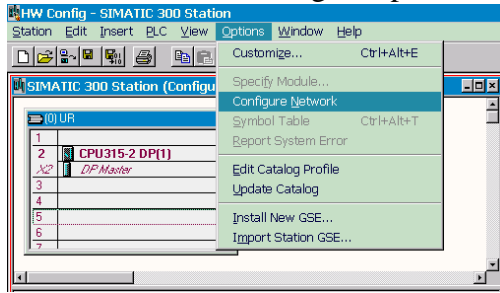


4. Double click on the hardware icon in “Simatic™ Manager”.
5. Select from the pull down menu: Option::Install new GSE.

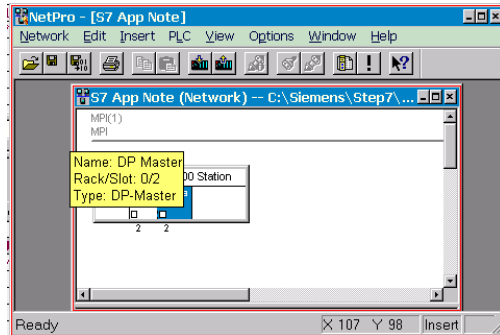
Note: After the “wizard” generates a new project, proceed to step 6 to configure the PLC hardware and Profibus Master.

If you have questions, please call the Product Support Group at (704) 588-3246.

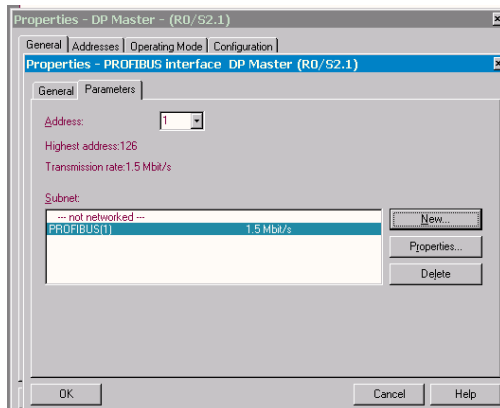
6. Select from the “HW Configure” pull-down menu: Option::Configure Network.



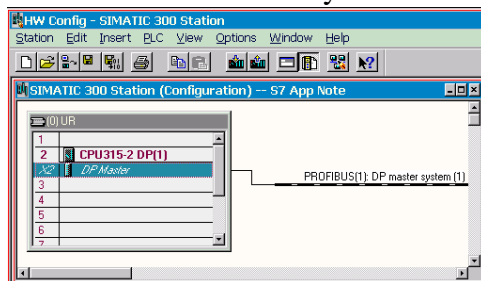
7. Next, double click on “DP Master”



8. Next, from “Properties – DP Master”, select “Properties”, then assign an address.



9. Next, right click on the “X2 DP-Master” of the Hardware Configure, Simatic 300” window, then select “Insert DP Master System”.



Note: A Profibus(1): DP Master Line appears:

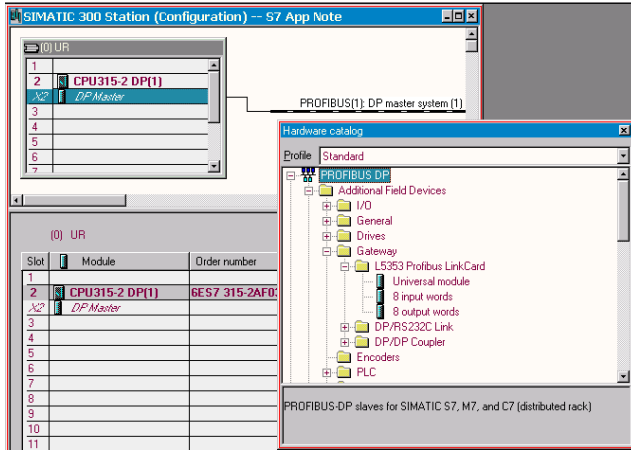
10. Select from the pull down menu, “Insert::hardware component”.

Note: A hardware window will appear. You can select the Link product as shown.

If you have questions, please call the Product Support Group at (704) 588-3246.

11. Make sure to install a power supply and any other hardware I/O's being used.

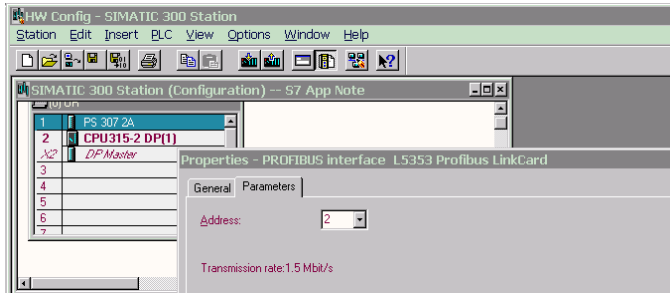
Note: Double click on the “Profibus(1): DP Master” line then select “Properties”, “Network setting”, “Parameters”, then uncheck the “Turn On Cycle Distribution of Bus Parameters”.



12. Install a L5353 in the Profibus listing.

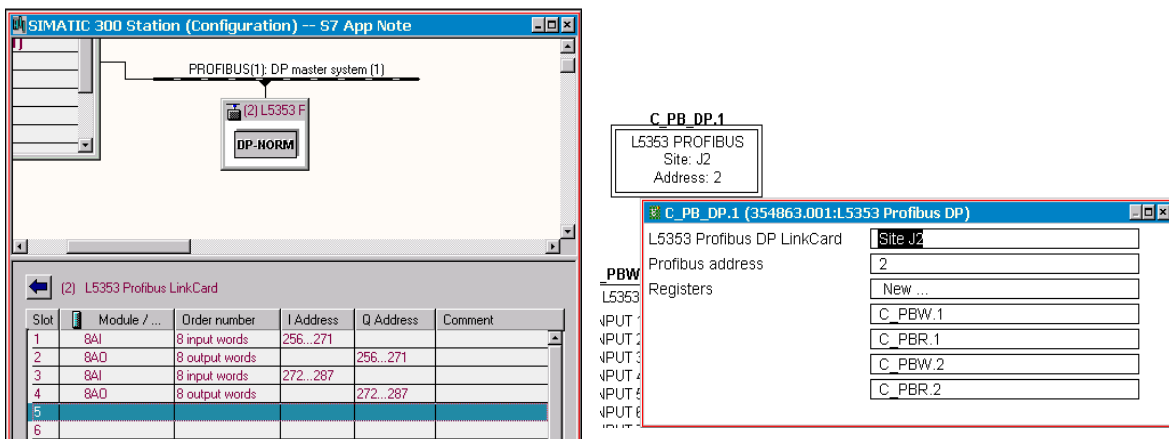
13. Add a “L5353 Profibus Link Card” folder from the “Hardware Catalog”.

Note: Scroll across and under the “Profibus(1): DP Master” line until the cursor changes into a “+ sign”.



14. Now you can assign a node address to L5353.

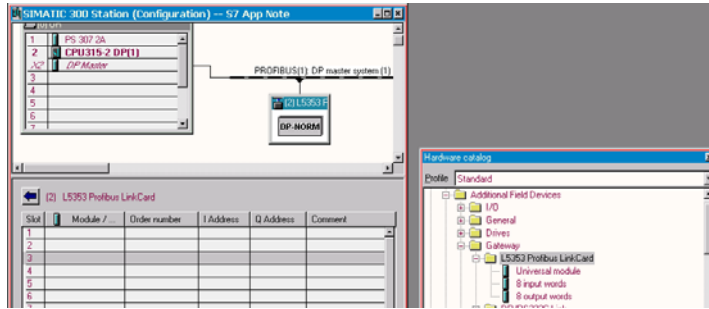
15. Now add the needed “8 Input word” or “8 Output word” as needed for program.



Note: Click on the “(2) L5353 DP-Norm” before you drag and drop.

If you have questions, please call the Product Support Group at (704) 588-3246.

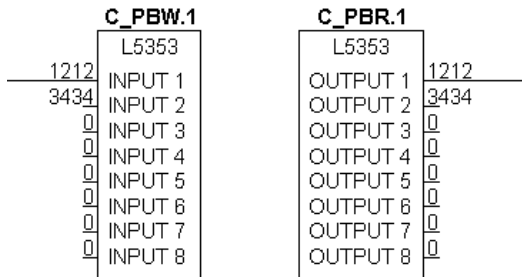
16. Verify the list of I/O words against the Link Configuration.



17. Next, from the pull down menu select “Station::Save and Compile”

18. Close this window and from the “Simatic™ Manager” highlight the Hardware icon and install.

Note: After installing the Link and plc program both LED’s on the L5353 should be green.



Note: The following is the data communication monitoring in *Link* and PLC:

Coping first two word IW1, IW2 (or double word ID1) to outppts of same designation.

```

    MOVE
    EN  ENO
    16#04bc0d6a  IN  OUT  16#04bc0d6a
    ID1  IN  OUT  QD1
  
```

Network 2 : Title:
Comment:

@Variable Table1 ONLINE					
Address	Symbol	Monitor	Format	Monitor Value	Modify Value
IW	1	---	DEC	1212	
QW	1	---	DEC	1212	
IW	3	---	DEC	3434	
QW	3	---	DEC	3434	

If you have questions, please call the Product Support Group at (704) 588-3246.